



# the Alpenglow

2,340 SF HOME ~ 3 BEDS + 2.5 BATHS ~ 1ST + 2ND FLOOR STUDY  
2 CAR GARAGE ~ PORCH, PATIO + COVERED BALCONY



**WATERSCAPES**

at Owl's Nest

North Lake Neighborhood





# WATERSCAPES

at Owl's Nest

North Lake Neighborhood

## the Alpenglow

2,340 SF

DETACHED HOME

3 BEDS + 2.5 BATHS

1ST + 2ND FLOOR STUDY

2 CAR GARAGE

PORCH, PATIO + COVERED  
BALCONY

909 SF UNFINISHED BASEMENT

Ask about Finish Options!



Artform CRS 1077.124 GL Aurelia Jane Classic - R8

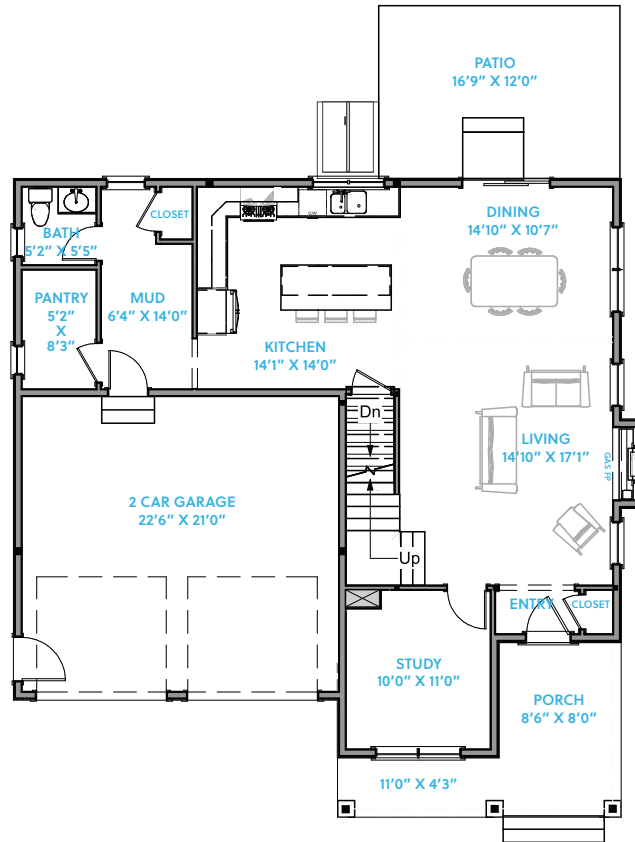
Renderings, images, and floorplans are conceptual artistic representations only, are not to scale, and are subject to change at any time without notice or obligation. Layout may be reversed and window placement varies.

The condominium project shown/depicted/referenced is not yet registered or exempted from registration by the New Hampshire Attorney General's Office, and until such time as registration or exemption from registration is ordered, no binding contract for the sale or lease of any unit or other interest therein may be created or entered into.

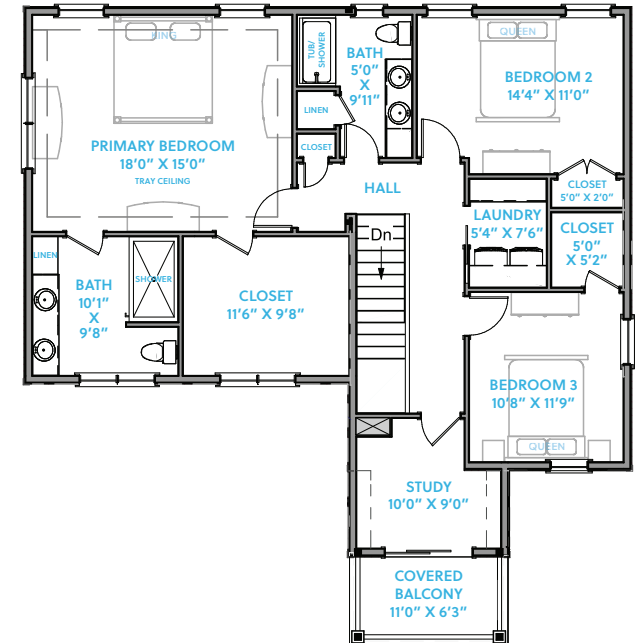
© 2023 Waterscapes. Equal Housing Opportunity.

MARKETED BY

**STREAMLINE**  
COMMUNITIES



FIRST FLOOR



SECOND FLOOR

WaterscapesNH.com ~ 888-726-0546 ~ OwlsNestResort.com



**OWL'S NEST**  
THE WHITE MOUNTAINS





# the Alpenglow<sup>+</sup>

2,631 SF HOME ~ 4 BEDS + 3.5 BATHS ~ 1ST + 2ND FLOOR STUDY  
2 CAR GARAGE ~ PORCH, PATIO + 2 COVERED BALCONIES



**WATERSCAPES**

at Owl's Nest

North Lake Neighborhood





# WATERSCAPES

at Owl's Nest

North Lake Neighborhood

*the Alpenglow<sup>+</sup>*

2,631 SF

DETACHED HOME

4 BEDS + 3.5 BATHS

1ST + 2ND FLOOR STUDY

2 CAR GARAGE

PORCH, PATIO +  
2 COVERED BALCONIES

1,152 SF UNFINISHED BASEMENT

Ask about Finish Options!



Artform CRS 1077.129.v5 GL Aurelia Jane Premier - 041223

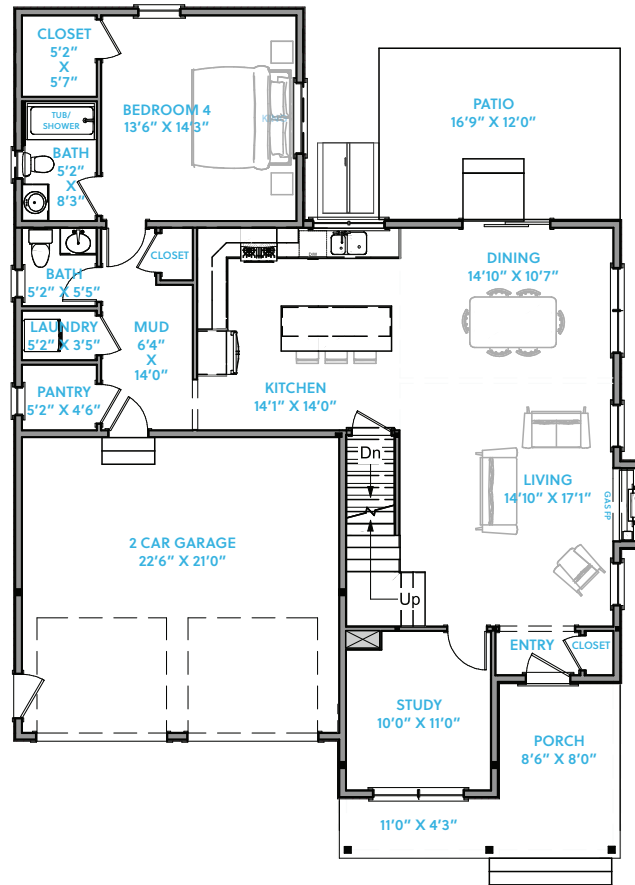
Renderings, images, and floorplans are conceptual artistic representations only, are not to scale, and are subject to change at any time without notice or obligation. Layout may be reversed and window placement varies.

The condominium project shown/depicted/referenced is not yet registered or exempted from registration by the New Hampshire Attorney General's Office, and until such time as registration or exemption from registration is ordered, no binding contract for the sale or lease of any unit or other interest therein may be created or entered into.

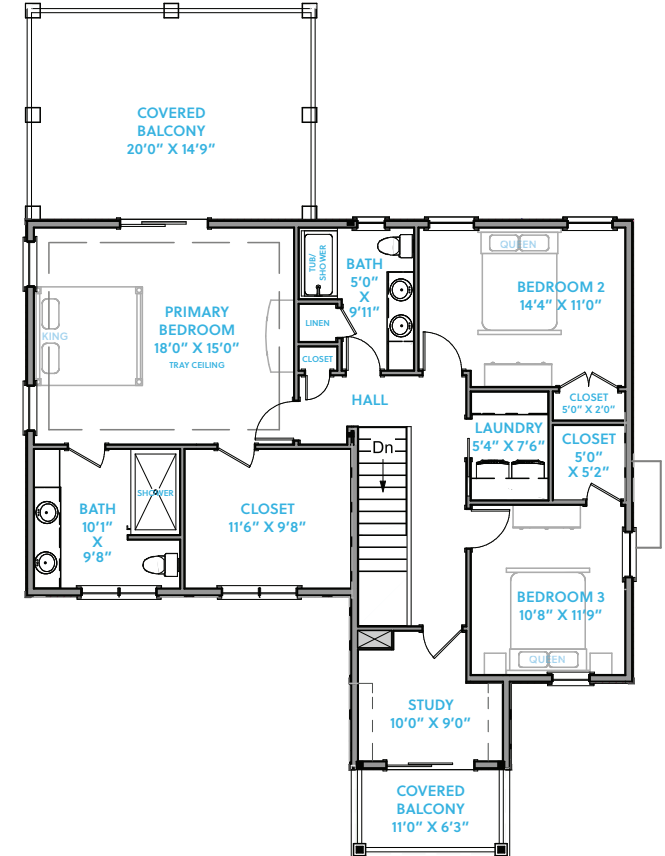
© 2023 Waterscapes. Equal Housing Opportunity.

MARKETED BY

**STREAMLINE**  
COMMUNITIES



FIRST FLOOR



SECOND FLOOR

WaterscapesNH.com ~ 888-726-0546 ~ OwlsNestResort.com



**OWL'S NEST**  
THE WHITE MOUNTAINS



# the Crescent

2,342 SF HOME ~ 3 BEDS + 3.5 BATHS ~ LOFT ~ 2 CAR GARAGE  
PORCH + DECK



**WATERSCAPES**

at Owl's Nest

North Lake Neighborhood





# WATERSCAPES

at Owl's Nest

North Lake Neighborhood

## the Crescent

2,342 SF

DETACHED HOME

3 BEDS + 3.5 BATHS

LOFT

2 CAR GARAGE

PORCH + DECK

1,163 SF UNFINISHED BASEMENT

Ask about Finish Options!



Artform CRS 1078.124 GR Alastair - R6

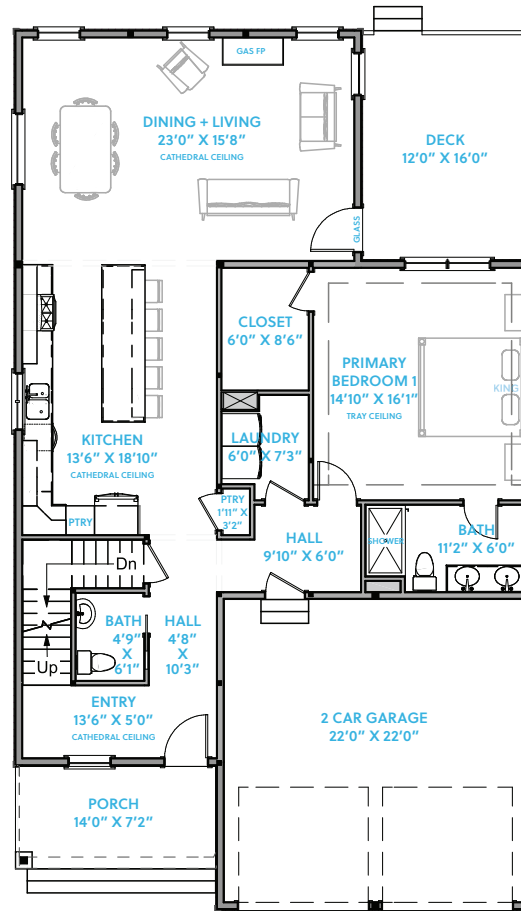
Renderings, images, and floorplans are conceptual artistic representations only, are not to scale, and are subject to change at any time without notice or obligation. Layout may be reversed and window placement varies.

The condominium project shown/depicted/referenced is not yet registered or exempted from registration by the New Hampshire Attorney General's Office, and until such time as registration or exemption from registration is ordered, no binding contract for the sale or lease of any unit or other interest therein may be created or entered into.

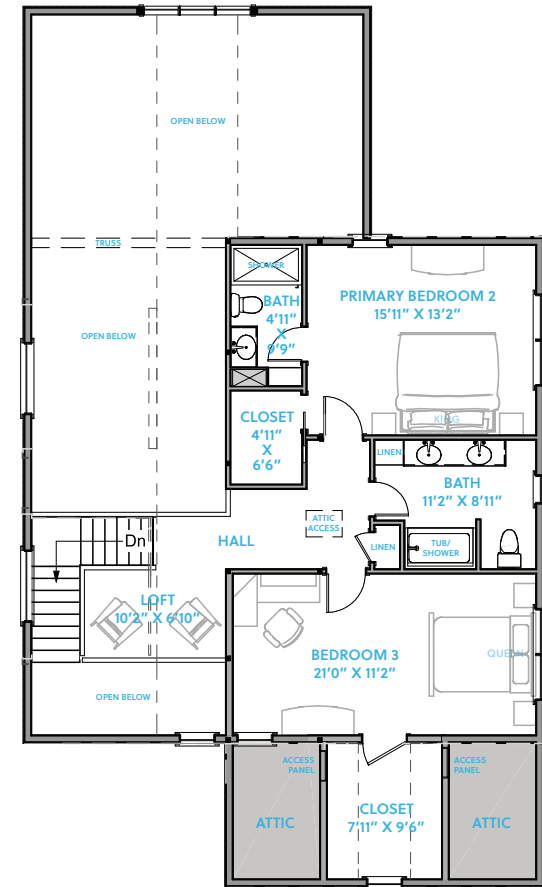
© 2023 Waterscapes. Equal Housing Opportunity.

MARKETED BY

**STREAMLINE**  
COMMUNITIES



FIRST FLOOR



SECOND FLOOR

WaterscapesNH.com ~ 888-726-0546 ~ OwlsNestResort.com



**OWL'S NEST**  
THE WHITE MOUNTAINS



*epic Views +  
epic course!!*

# the Horizon

2,324 SF HOME ~ 3 BEDS + 2.5 BATHS ~ STUDY ~ 2 CAR GARAGE  
PORCH, PATIO + BALCONY



**WATERSCAPES**

at Owl's Nest

North Lake Neighborhood





# WATERSCAPES

at Owl's Nest

North Lake Neighborhood

## the Horizon

2,324 SF

DETACHED HOME

3 BEDS + 2.5 BATHS

2ND FLOOR STUDY

2 CAR GARAGE

PORCH, PATIO + BALCONY

1,214 SF UNFINISHED BASEMENT

Ask about Finish Options!



Artform CRS 419.126.v14 GL Sea Watch - 040523

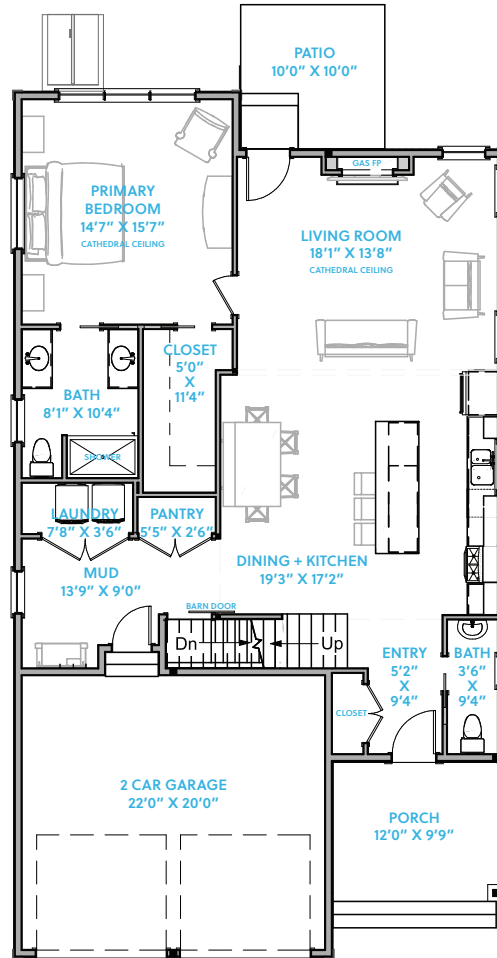
Renderings, images, and floorplans are conceptual artistic representations only, are not to scale, and are subject to change at any time without notice or obligation. Layout may be reversed and window placement varies.

The condominium project shown/depicted/referenced is not yet registered or exempted from registration by the New Hampshire Attorney General's Office, and until such time as registration or exemption from registration is ordered, no binding contract for the sale or lease of any unit or other interest therein may be created or entered into.

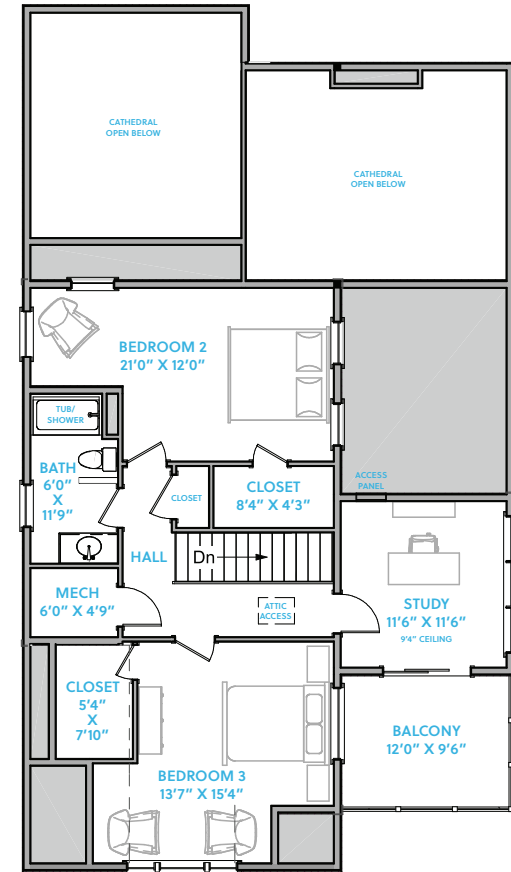
© 2023 Waterscapes. Equal Housing Opportunity.

MARKETED BY

**STREAMLINE**  
COMMUNITIES



FIRST FLOOR



SECOND FLOOR

WaterscapesNH.com ~ 888-726-0546 ~ OwlsNestResort.com



**OWL'S NEST**  
THE WHITE MOUNTAINS